

Genie**STAR** PhotoStation Professional/Standard Installation and key functions

I. Hardware requirements:

1. Operating System: Microsoft Windows XP SP2, Windows Vista
2. CPU: Intel Pentium 4 2.4 GHz or above
3. Memory: 1GB or above.
4. Hard Disk: At least 10 GB
5. Screen Resolution: 1024x768
6. DVD/CD ROM
7. USB port
8. Media card reader

II. Installation:

1. Insert your **PhotoStation Professional** or **PhotoStation Standard** CD into the CD-ROM drive. The installation program will then start automatically. If the installation program does not start automatically, just go to your computer's CD drive and double click on [setup.exe] to activate it.
2. Select language and click on [OK].
3. Accept License Agreement and click on [Next >].
4. Accept software version and click on [Next >].
5. Accept assigned destination folder for the program or click on [Browse...] to select a folder of your choice. Click on [Install] to begin software installation.
6. After the software has successfully installed, do not close the installation window but wait a few seconds for the **[PhotoStation Settings]** window to appear.
7. In the **[PhotoStation Settings]** window, go through each tab and fill out parameters to the fields. Please refer to the installation manual file in the CD for more details.
8. Click on [OK] when you are done with the settings.
9. Close the **[PhotoStation Settings]** window.
10. Insert software protection dongle in the USB port if this software is an official version. Skip this step otherwise.
11. You have completed the installation.

III. Run the PhotoStation software

If the software has been successfully installed, you will see a [PhotoStation Professional] or [PhotoStation Standard] shortcut on your computer desktop. To run the PhotoStation software, simply double click on the shortcut icon, or go to the program menu, Start ->All Programs-> PhotoStation Professional, and select PhotoStation Professional. For PhotoStation Standard, Start ->All Programs-> PhotoStation Standard, and select PhotoStation Standard.

To reset your settings: go to the program menu, Start ->All Programs-> PhotoStation Professional, and select PhotoStation Professional Settings. For PhotoStation Standard, Start ->All Programs-> PhotoStation Standard, and select PhotoStation Standard Settings.

IV. Exit the software

To exit, return the software to its opening screen and do one of the follows.

- **from keyboard:** use [Esc] key to exit
- **on screen:** click/tap three times on the upper left-hand corner and consecutively two times on the upper right-hand corner within 5 seconds to exit

V. Write to CD requirement

700 MB capacity writable CD is required for [Write to CD] option.

VI. Set printer paper quantity

Only use this option if you wish the software to show warning messages to the customers when photo paper is not enough for the print jobs.

At the opening screen, click/tap five times on the upper-middle white title bar area. Enter password to enter the printer page. Reset paper quantity each time when you refill a new roll of photo paper in order to have an accurate count. You can see/change the default password from the settings program at the [Owner] tab.

VII. Show/Hide color adjustment tools

By default, the color adjustment tools are not showing.

From photo preview page, you can click/tap twice on the white title bar as shown on the figure below to bring up the color adjustment tools. Double click on the same area again to hide the color adjustment tools.



VIII. Daily and Monthly reports:

The daily and monthly printing report is created in [C:\Documents and Settings\\Application Data\GenieSTAR\GSPhotoStation Professional \Reports\Printing] for Windows XP, or in [C:\Users\\AppData\Roaming\GenieSTAR\GSPhotoStation Professional\Reports\Printing] for Windows Vista.

For example, the daily report for March 26, 2007 on Windows XP is available in [C:\Documents and Settings\\Application Data \GenieSTAR\GSPhotoStation Professional\Reports\Printing\2007\March\26.xml]; and the monthly report for March 2007 is in [C:\Documents and Settings\\Application Data \GenieSTAR\GSPhotoStation Professional\Reports\Printing\2007\March\Monthly.xml].

If your computer has Microsoft Internet Explorer Browser installed, then just double click on .xml to see the report.

IX. Show photo sizes on your software's screen

If you connect the software to photo printer(s) and/or a minilab for direct printing, the photo sizes you selected for your photo printer(s) in the [Printers] tab and/or for your minilab in the [Minilab] tab will be listed as available sizes on the software's screen for your customers to choose.

Otherwise, if you would rather not to have direct printing but save your customers' orders in the [Output Folder] in your computer hard drive or send customer's order to a remote FTP server, all of the photo sizes you selected in the [Paper/Price] Settings will be listed on the software's screen.

X. Set up Bluetooth device

Step 1: Find out if your computer already has the built-in Bluetooth. If not, you need to install a Bluetooth dongle and its driver in the computer.

If your Bluetooth is built-in, you should already have folders under the Bluetooth folder. On the other hand, if you install the Bluetooth dongle and its driver, the driver software will create new folders in your computer. These folders are used to receive files that are sent from a Bluetooth device such as a cell phone. Different brands of cell phones may have different ways to transfer files.

Step 2: Set up a path to locate your Bluetooth in the computer.

To deal with different transfer methods used by different cell phone companies, there are two things you need to do:

(1) Find out the folder name and path

After you install your Bluetooth dongle and driver software, you may see several sub-folders under one top-level folder. The name of this top-level folder is what we need. Open the settings of your software and enter the path containing this folder name in the [Bluetooth] field. The [Bluetooth] field is in (PhotoStation Settings --> [Source/Output] tab --> [Bluetooth] field).

Here is an example of how the top-level folder and its sub-folders may look like,

```
C:\Documents and Settings\\My Documents\Bluetooth\BIP\  
C:\Documents and Settings\\My Documents\Bluetooth\inbox\  
C:\Documents and Settings\\My Documents\Bluetooth\Outbox\  
C:\Documents and Settings\\My Documents\Bluetooth\Share\  

```

In this example, the path and folder name we need for the [Bluetooth] field in the settings is "C:\Documents and Settings\\My Documents\Bluetooth".

Please note that, not every bluetooth dongle works this way but most of them do. Choose the one that works like this.

(2) Make sure your Bluetooth does not require any password from the sender when receiving files from outside device

After installing the Bluetooth driver software, make sure a password is NOT required. This means that the Bluetooth

receiver is now open for any files from senders.

Step 3: How to transfer photo from cell phone to software

Once you have entered the Bluetooth path in the [Bluetooth] field in the settings program, next time you run PhotoStation again you will find a Bluetooth button and instructions on screen. When the Bluetooth button is chosen, customers will see a Bluetooth file receiving page. Just follow the instructions on that page and start cell phone photo transfer.

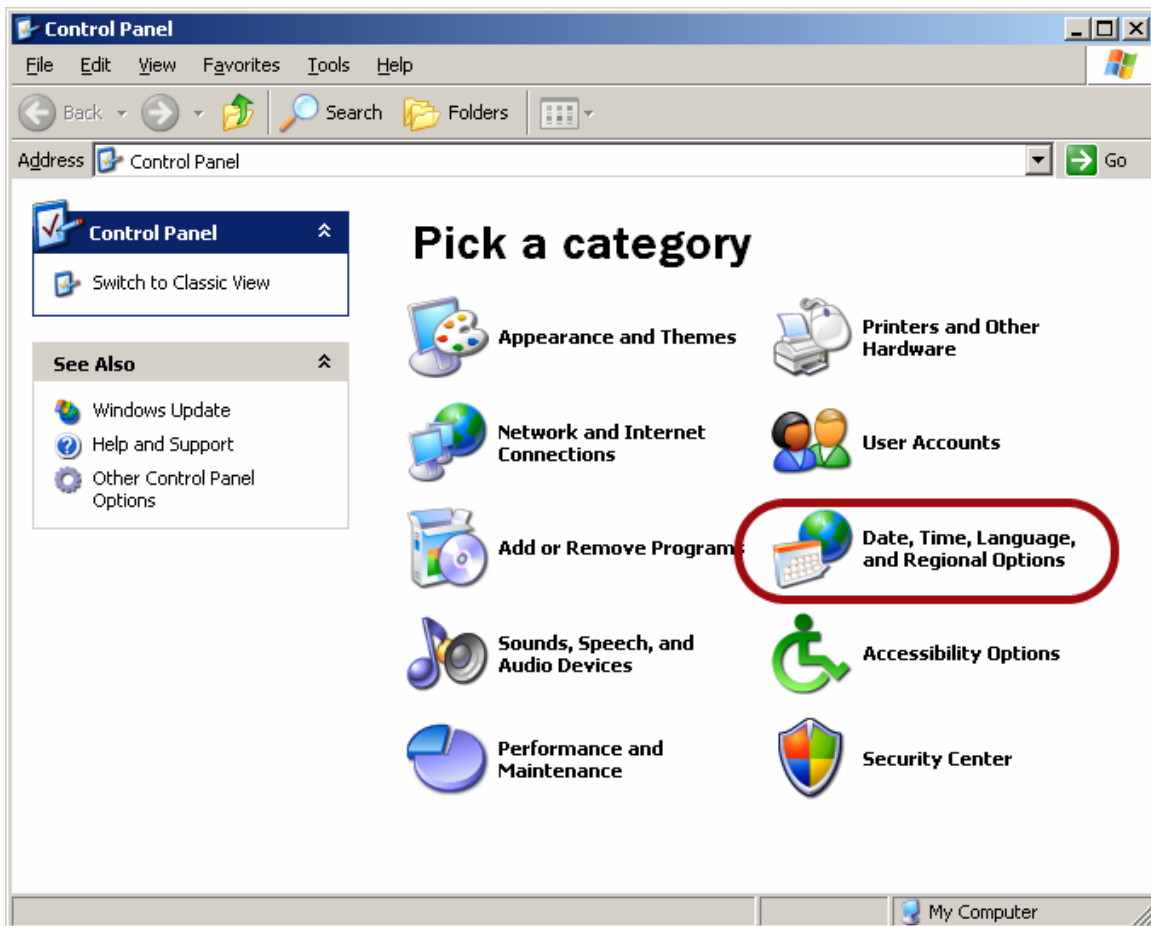
Please note that if you leave the [Bluetooth] field blank in settings program, the Bluetooth option will not be shown in the software's main page.

XI. Enable languages on Windows XP for GenieSTAR software

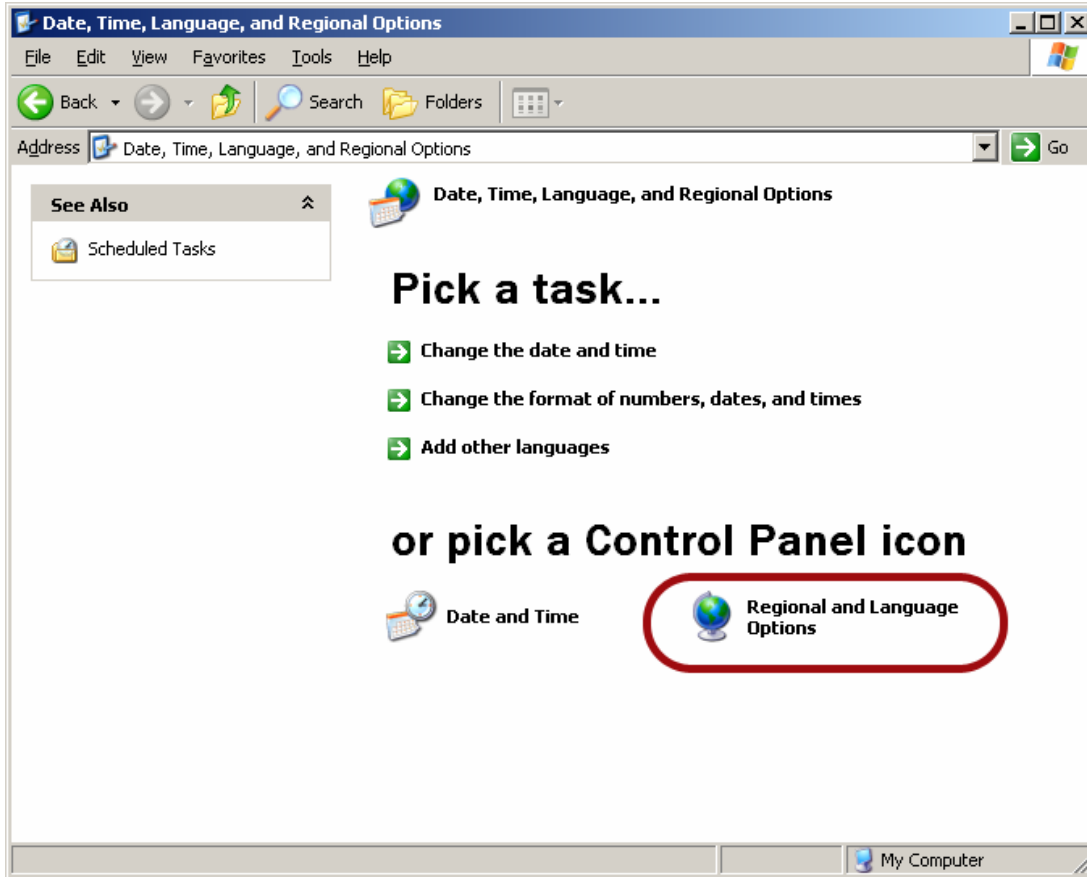
You will need to have Windows XP installation CD or I386 folder on your computer.

1. Go to Control panel.

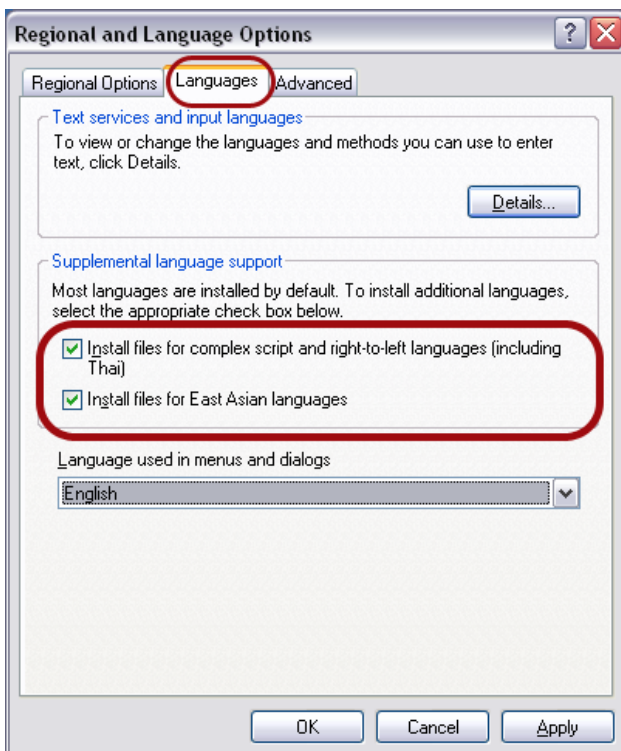
Click on [Date, Time Language, and Regional Options].



2. Click on Regional and Languages Options.

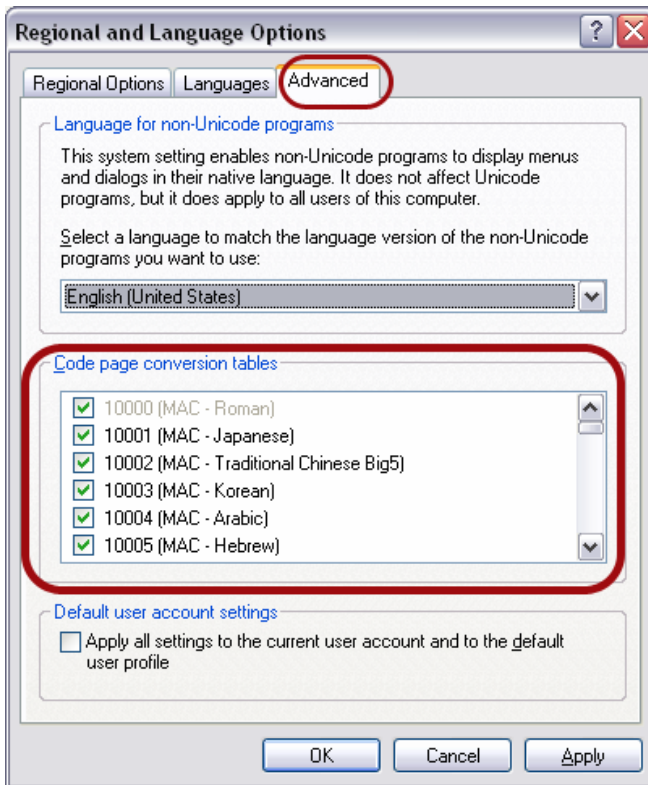


3. When [Regional and Languages Options] window appears, click on [Language] tab. Click and check on both check boxes in [Supplemental language support] section.



4. Click on [Advanced] tab

Click and check on all check boxes [Code page conversion tables] section, scroll down the list to make sure every check box is checked on.

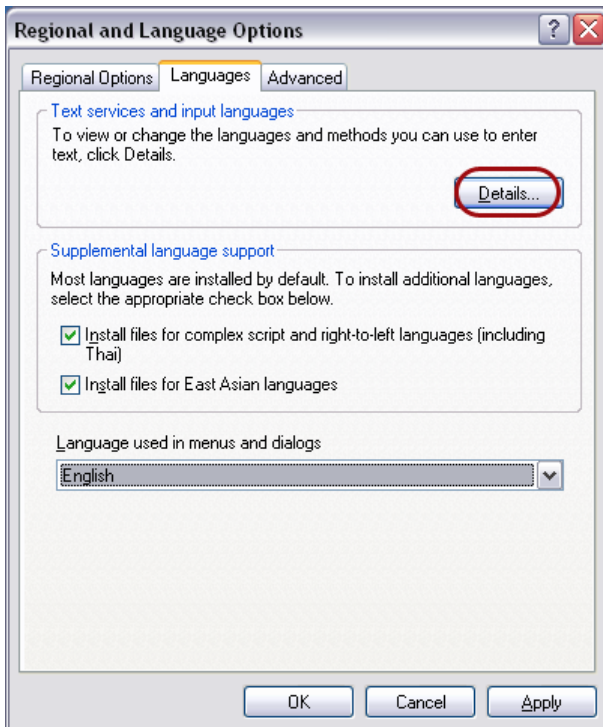


5. Click [OK] to finish.

You will be prompted to insert Windows XP installation CD or point to I386 folder.

XII. Add keyboard input method on Windows XP for GenieSTAR software

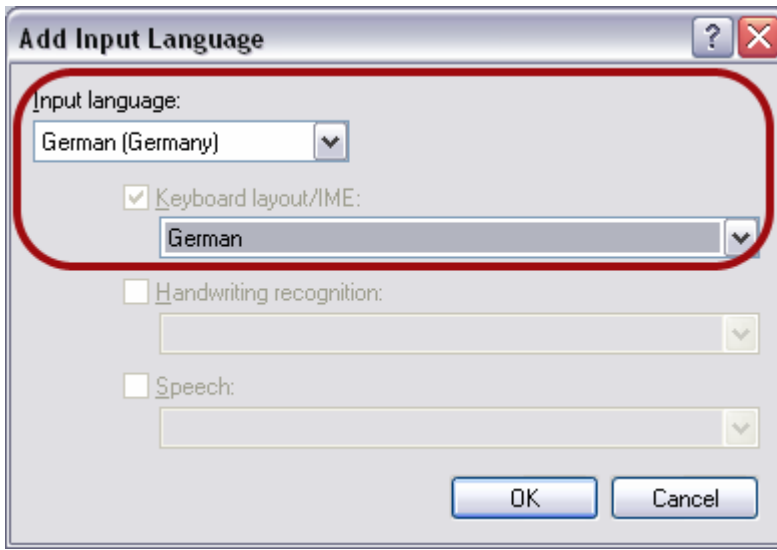
1. Repeat step 1 to step 3 on previous section [Enable languages on Windows XP for GenieSTAR software].
2. Click on [Details...] button on [Text services and input languages] section.



3. Click on [Add...] button on [Installed services] section. When [Add Input language] window appears, click on [Input language] and [Keyboard layout/IME] to select language and keyboard input methods.



4. Repeat step 3 to select all languages that GenieSTAR software currently supported.



Input language	Keyboard layout/IME
Chinese (PRC)	Chinese (Simplified) – Microsoft Pinyin IME 3.0
Chinese (Taiwan)	Microsoft New Phonetic IME 2002a
English (United States)	US
French (France)	French
German (Germany)	German
Hebrew	Hebrew
Korean	Korean Input System (IME 2002)
Lithuanian	Lithuanian
Polish	Polish (214)
Russian	Russian

5. Click [OK] on all opened window to finish.